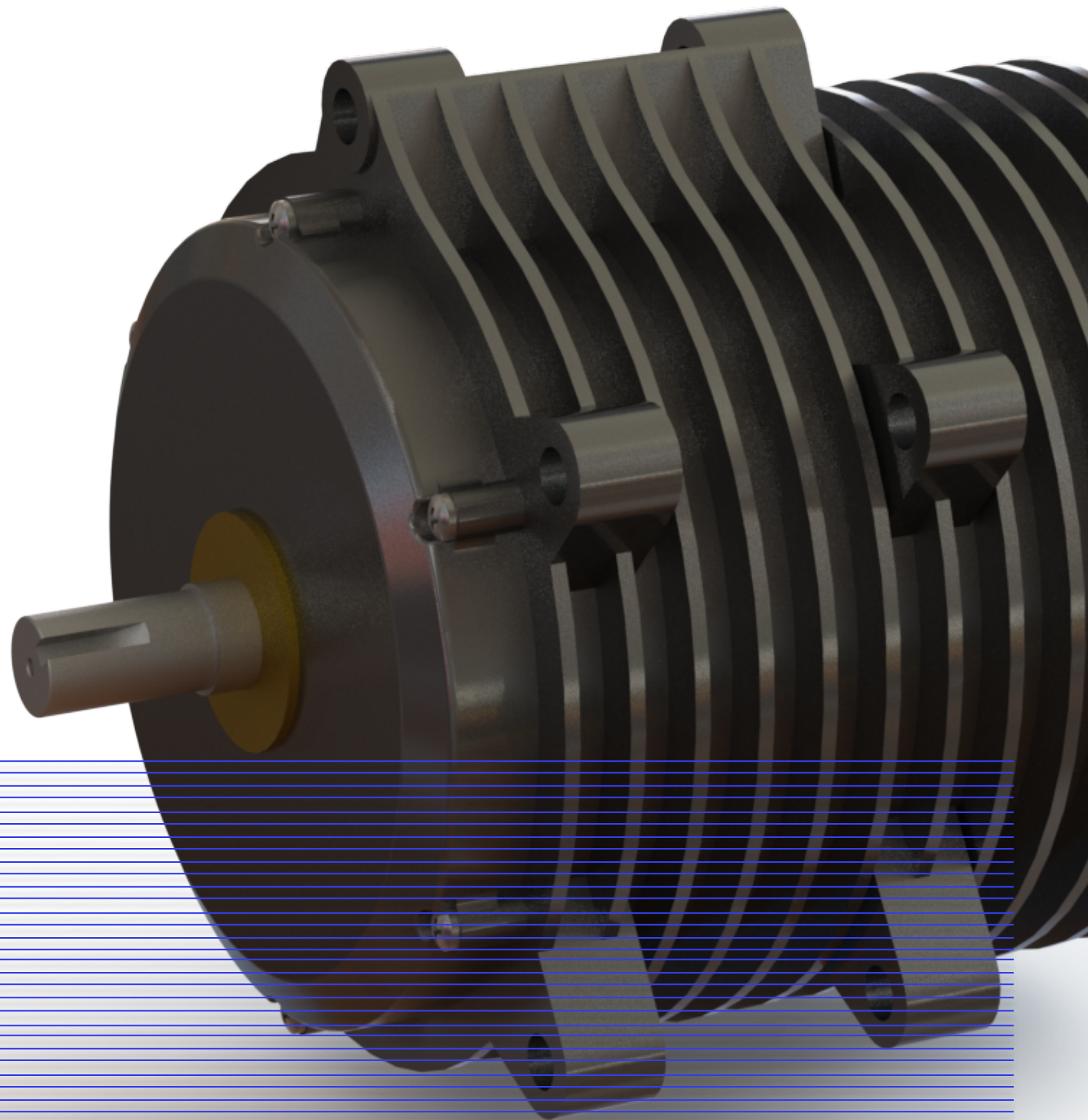




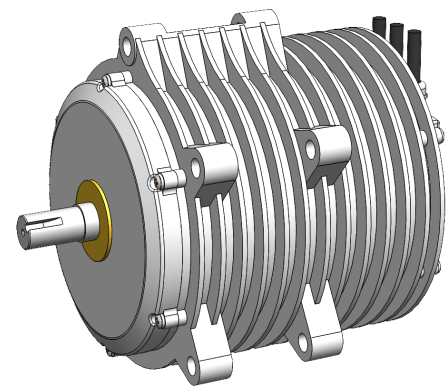
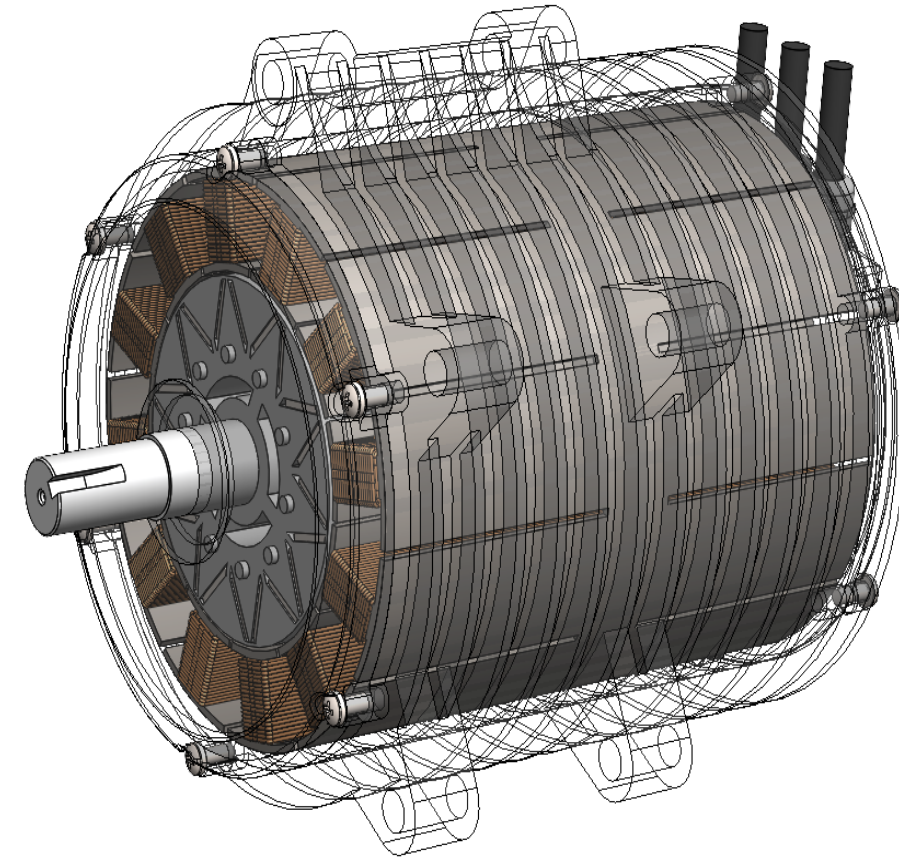
PMSM/ LC (MOTOR)



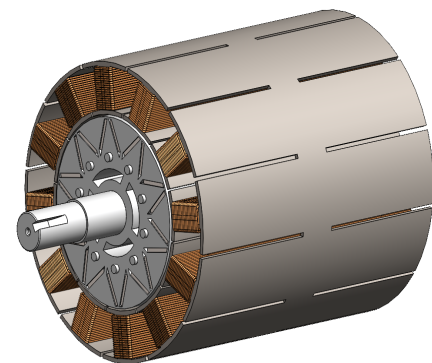
ELEVATE POWER, MAXIMIZE EFFICIENCY: PMSM/LC - UNLEASHING PRECISION AND PERFORMANCE IN EVS AND BEYOND

STEP INTO THE FUTURE OF ELECTRIC MOBILITY WITH PMSM/LC, A GROUNDBREAKING MOTOR DESIGNED TO REDEFINE THE LANDSCAPE OF ELECTRIC PROPULSION. THIS PRECISION-ENGINEERED MARVEL BOASTS A FORMIDABLE 10KWH MOTOR POWER, MAKING IT THE IDEAL CHOICE FOR BOTH ELECTRIC VEHICLES (EVS) AND HEAVY-DUTY APPLICATIONS. CRAFTED FROM A LIGHTWEIGHT YET DURABLE ALUMINUM ALLOY, THE DESIGN INCORPORATES THE GOLDEN RATIO FOR STRUCTURAL INTEGRITY AND EFFICIENCY.

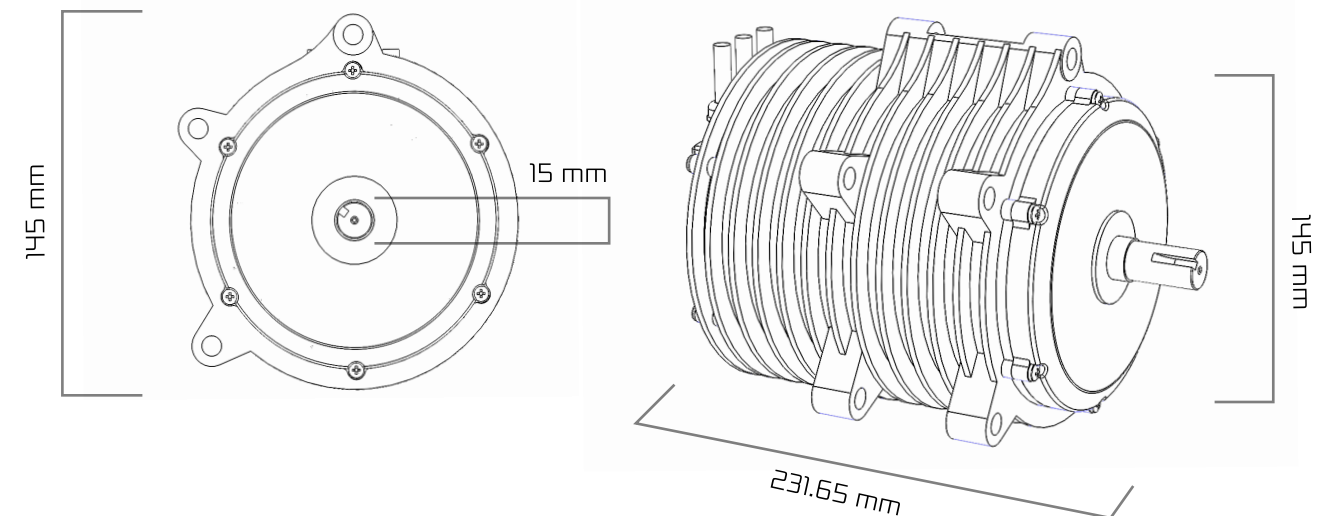
IN THE WORLD OF ELECTRIC MOBILITY, PRECISION PERFORMANCE IS PARAMOUNT, AND PMSM/LC DELIVERS JUST THAT. WITH A STRATEGIC MAGNET ARRANGEMENT, IT ACHIEVES SUPERIOR RPM AND TORQUE, SETTING NEW BENCHMARKS FOR POWER AND RELIABILITY. THIS MAKES PMSM/LC NOT JUST A MOTOR BUT A POWERHOUSE, DRIVING THE EFFICIENCY OF EVS TO UNPRECEDENTED LEVELS.



CAD RENDER



INSIDE VIEW OF PMSM



AMEC TECHNOLOGY

REVOLUTIONIZING ELECTRIC PROPULSION WITH PMSM/LC

DELVE INTO THE SPECIFICATIONS, AND THE EFFICIENCY OF PMSM/LC BECOMES EVEN MORE APPARENT. WITH A TORQUE OF 96N/M, A MAXIMUM RPM, AND A VOLTAGE OF 59V, IT PERFECTLY BALANCES POWER AND CONTROL. WEIGHING A MERE 9.744KG, IT EXEMPLIFIES EFFICIENCY WITHOUT COMPROMISE, WHILE OPERATING AT A MAXIMUM CURRENT OF 198 AMP AND ACHIEVING AN OUTSTANDING MAXIMUM ENERGY EFFICIENCY OF 94%.

POWER	10 KWH
TORQUE	96 N/M
CHEMISTRY	12,000 RPM
VOLTAGE	59V
WEIGHT	9.74 KG

POWER

VOLTAGE

WEIGHT

450 KWH

900 V

20 KG

